

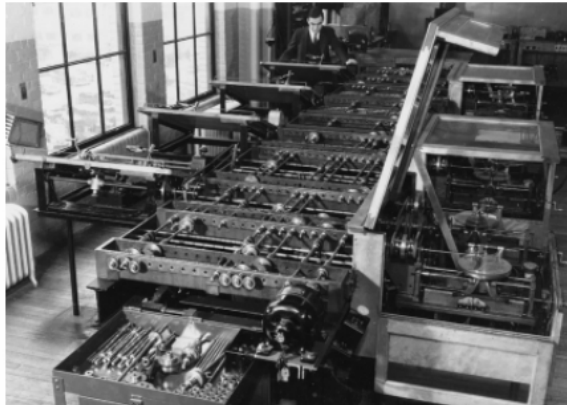
Additive Assembly of Functional Digital Materials



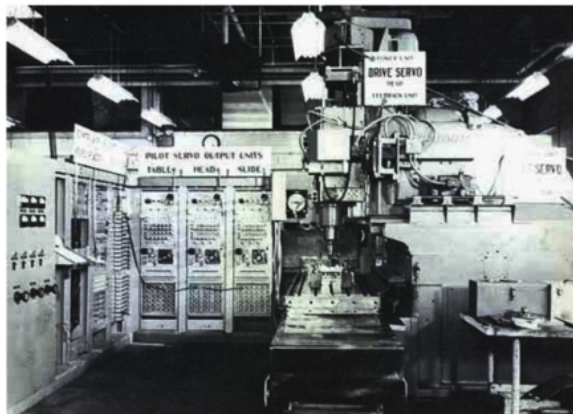
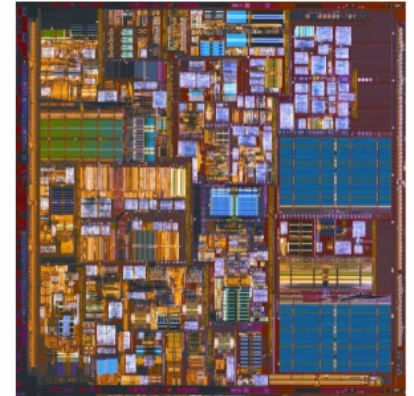
Digital Revolutions



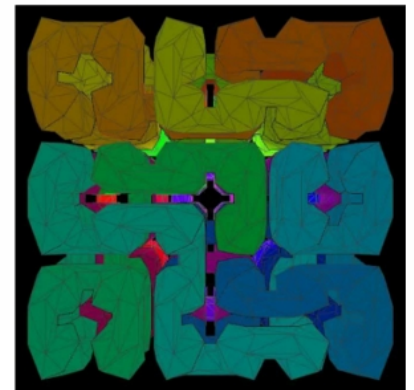
analog → digital communication
~1945



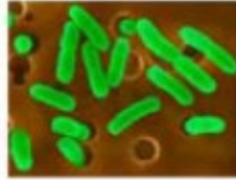
analog → digital computation
~1955



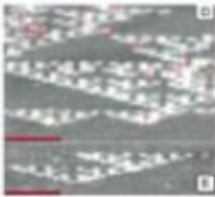
analog → digital fabrication
~2005



BIOLOGY



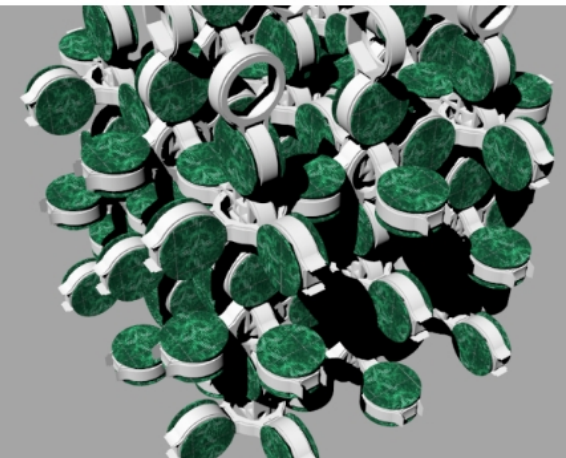
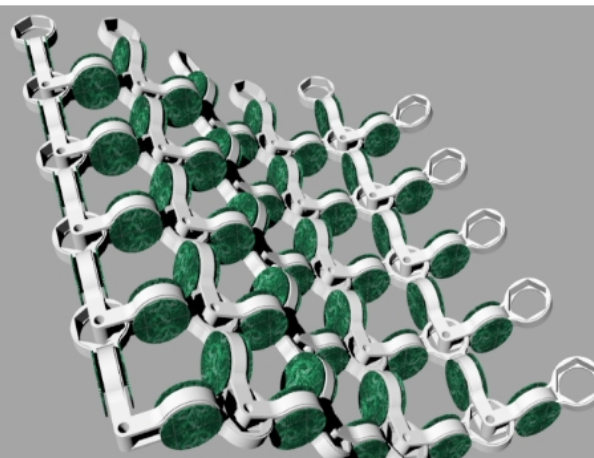
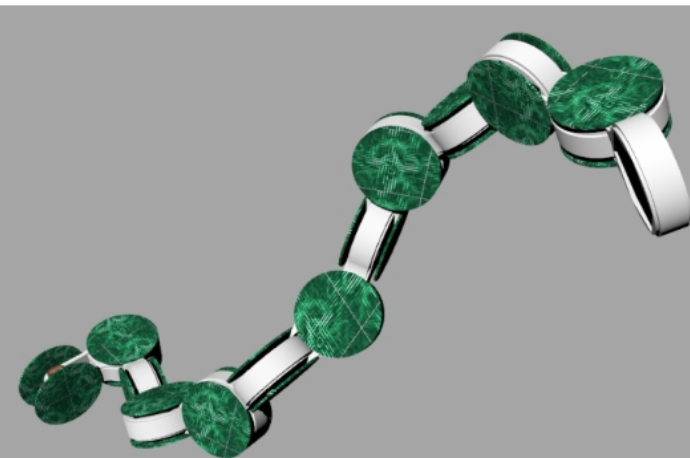
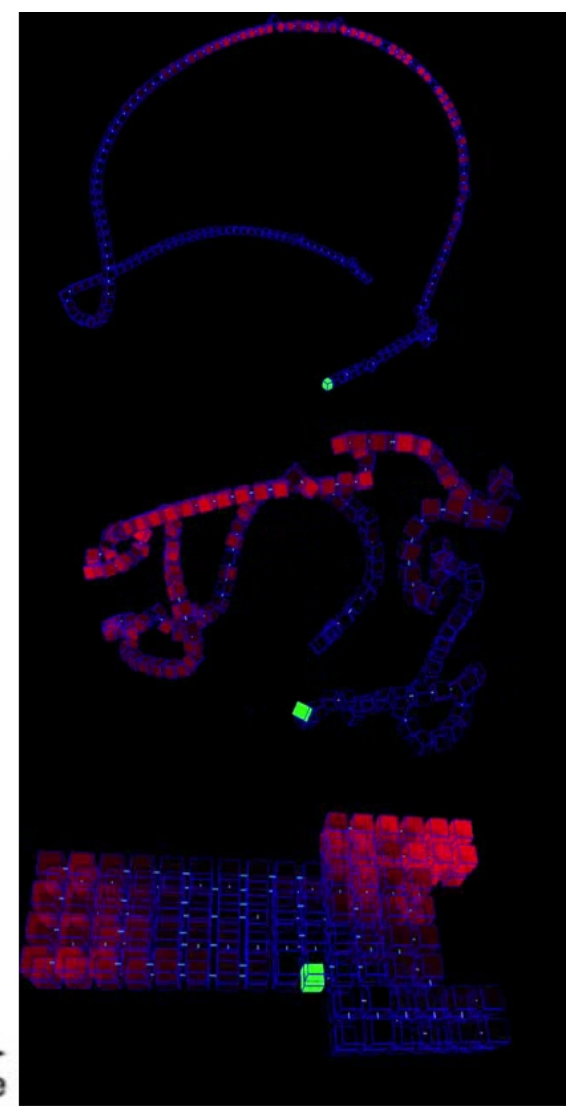
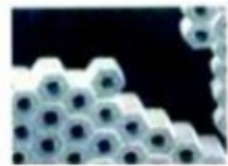
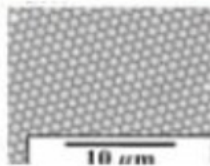
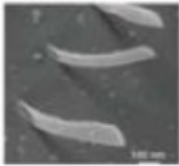
**PROGRAMMABLE
ASSEMBLY**



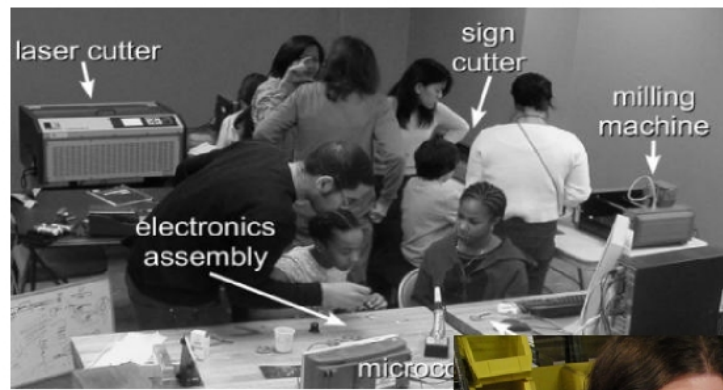
**CODED
ASSEMBLY**



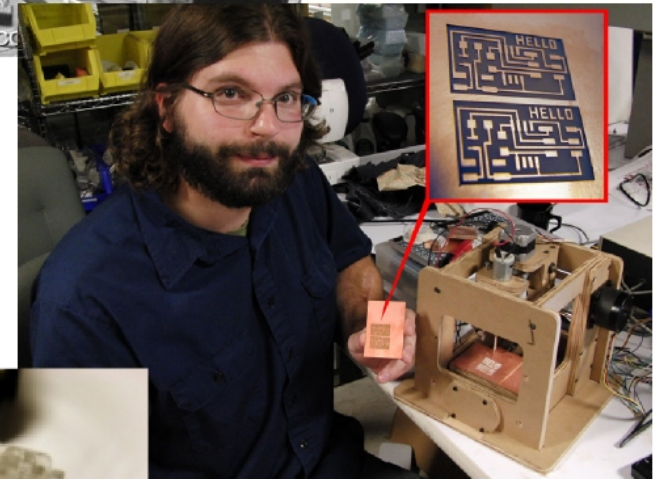
**SELF
ASSEMBLY**



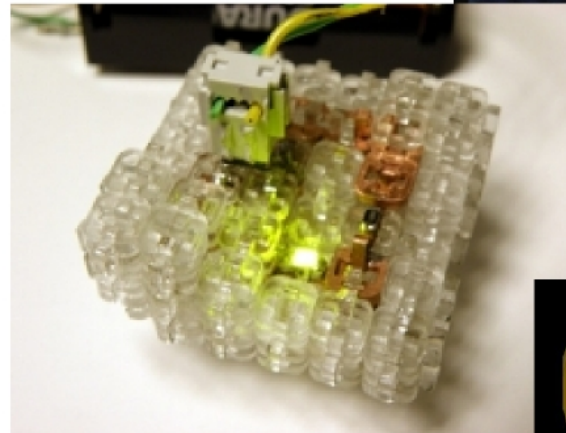
1.0: computers → machines



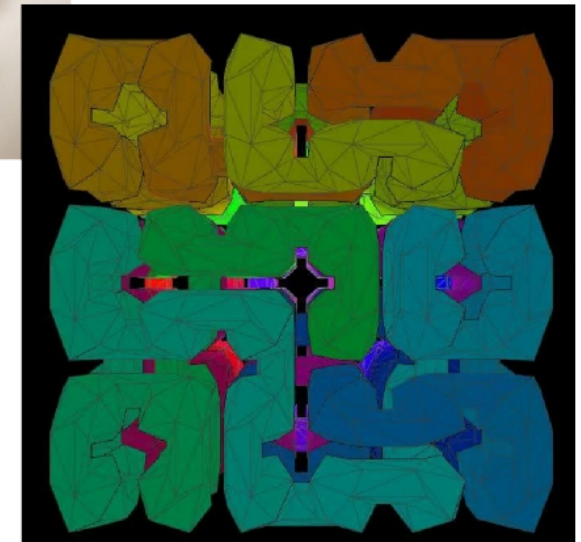
2.0: machines → machines



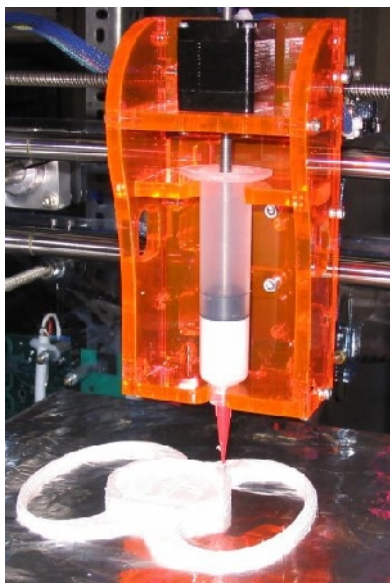
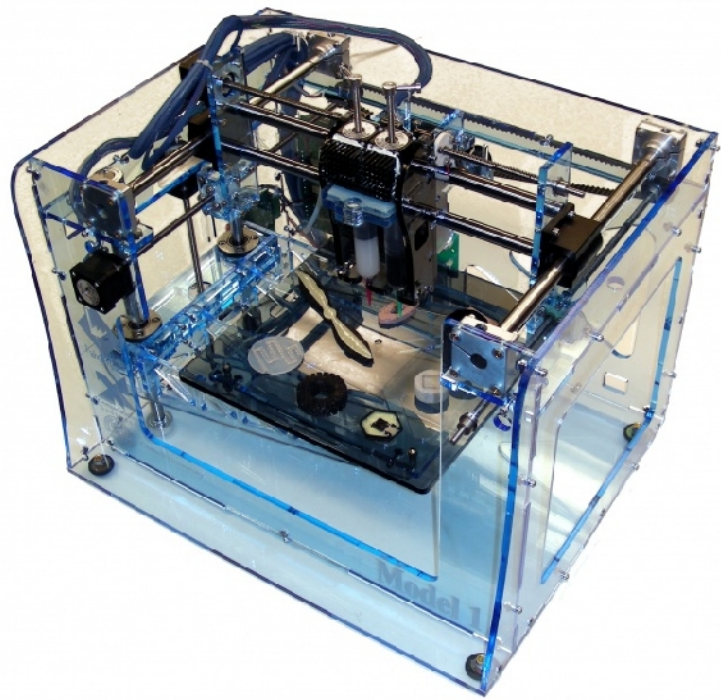
3.0: codes → materials



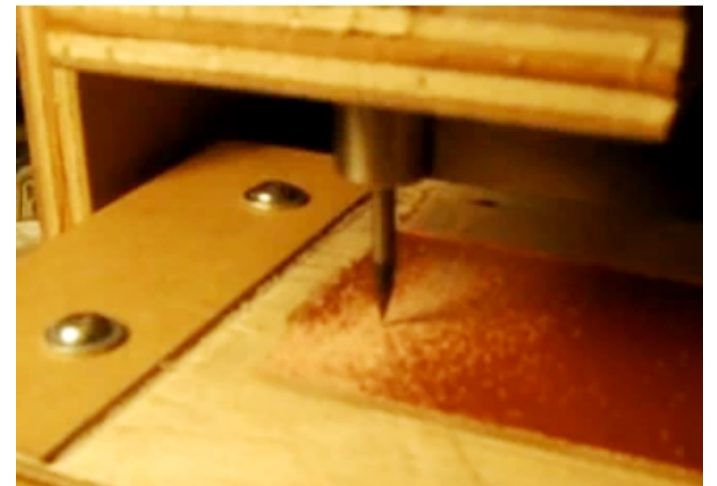
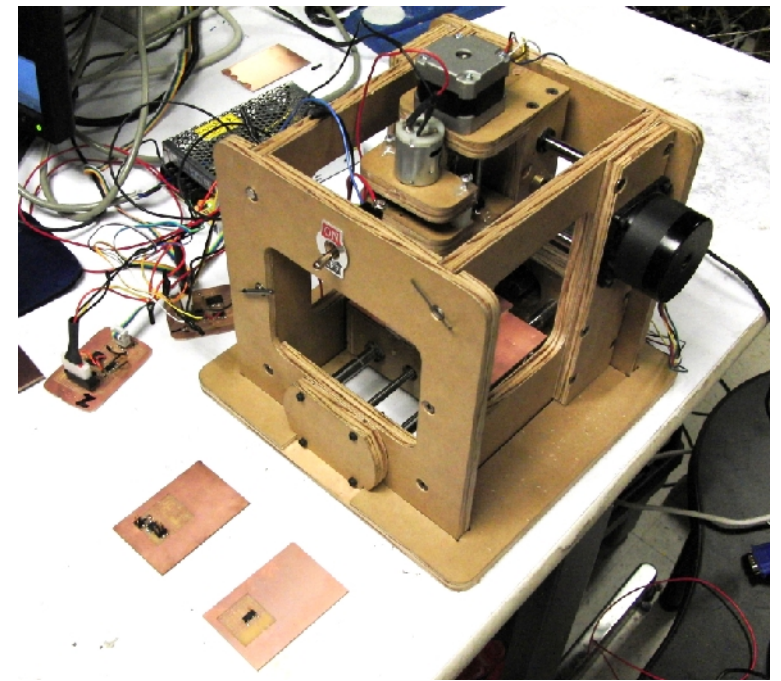
4.0: programs → materials



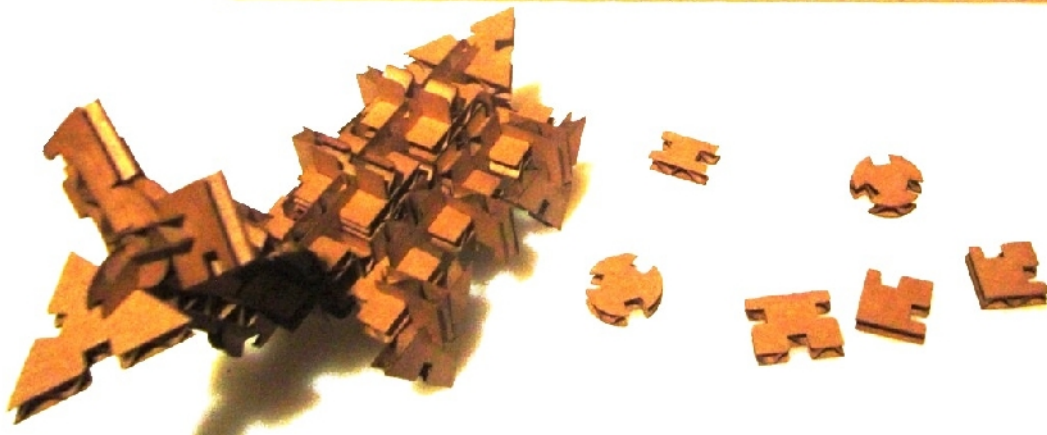
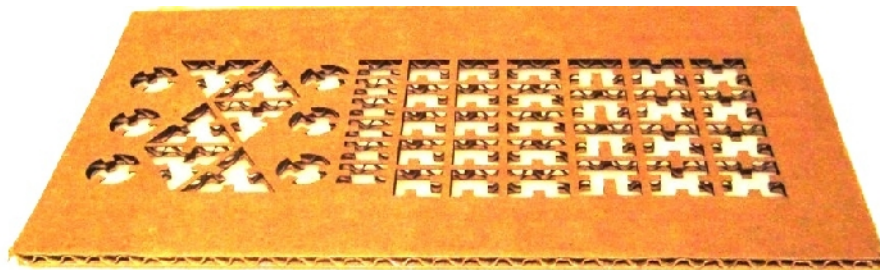
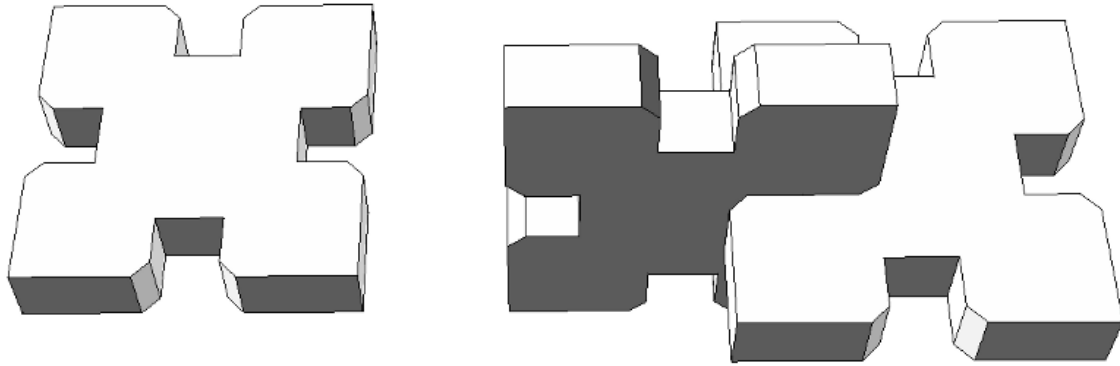
Additive



Subtractive

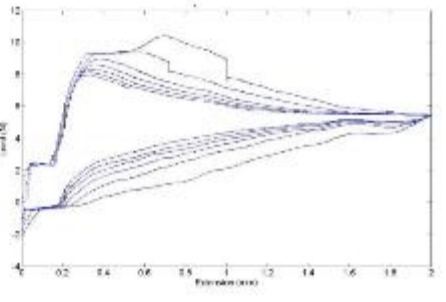
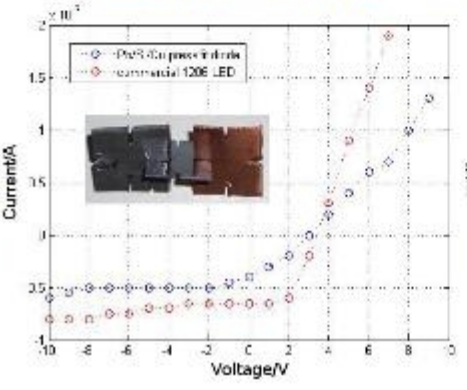
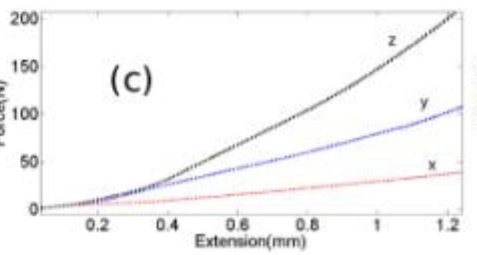
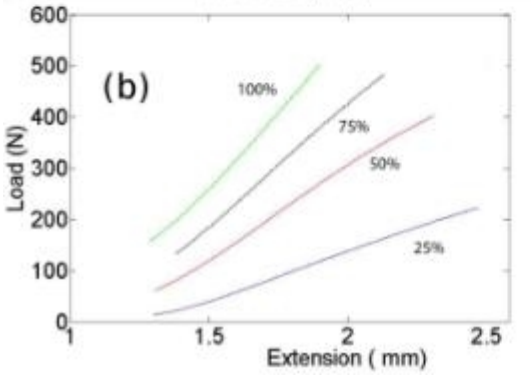
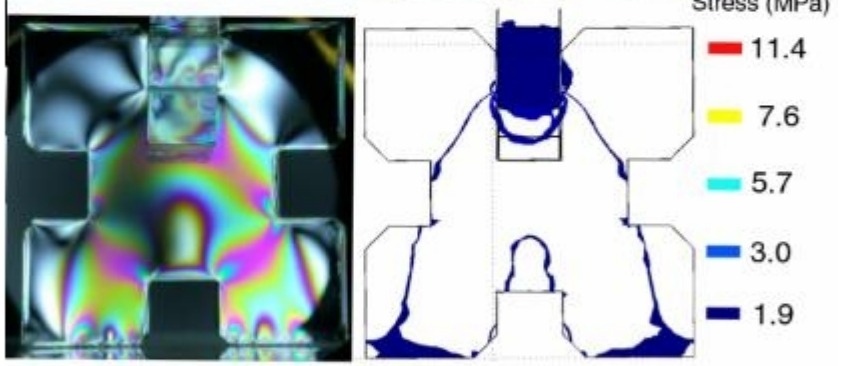
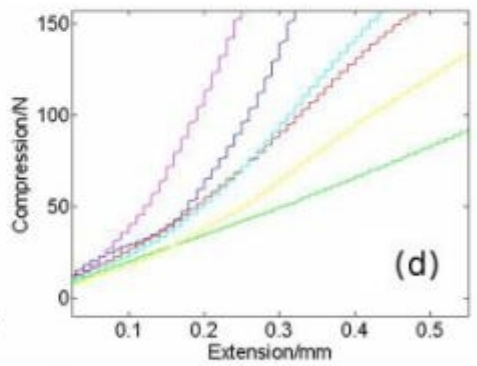
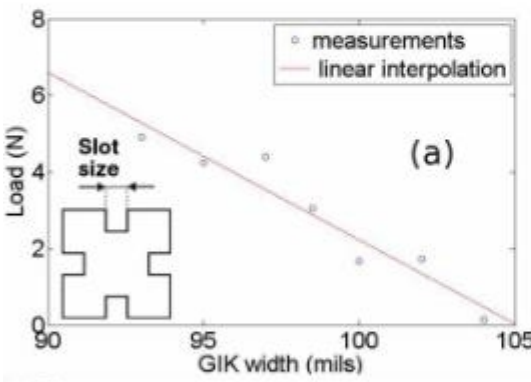
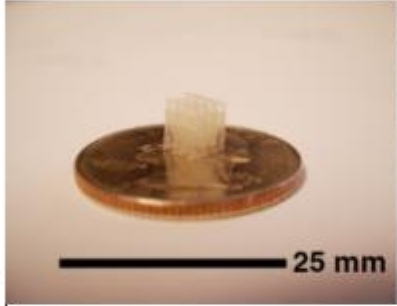
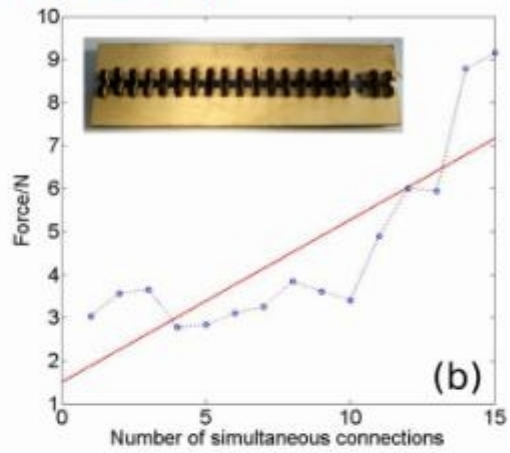
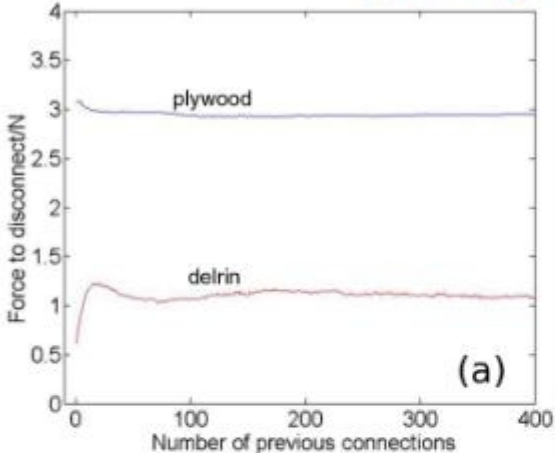
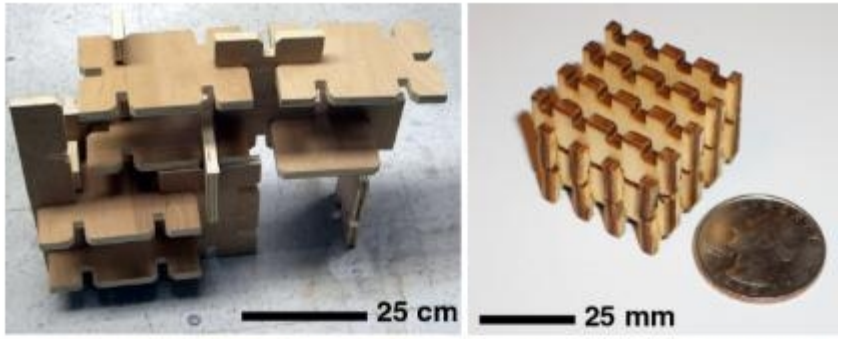


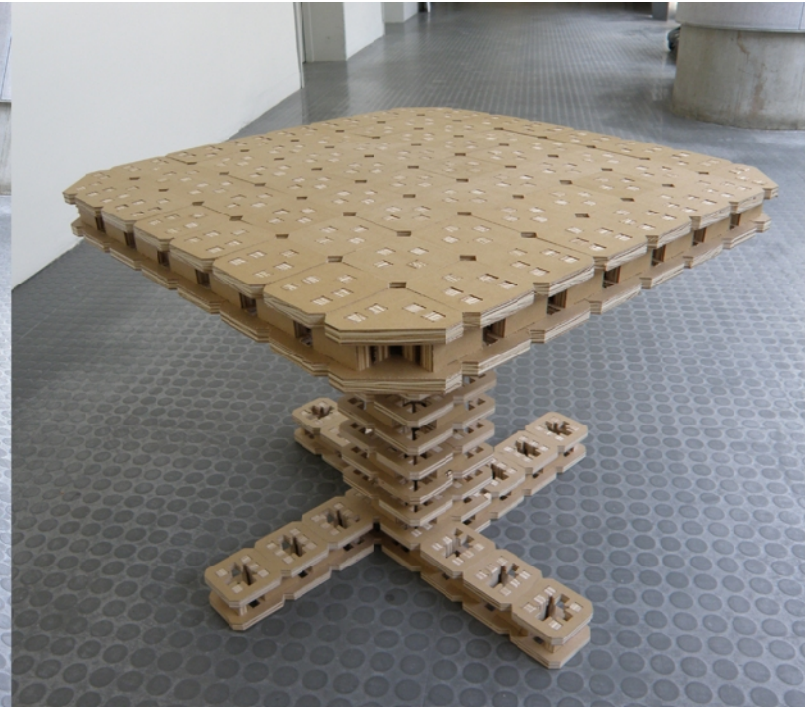
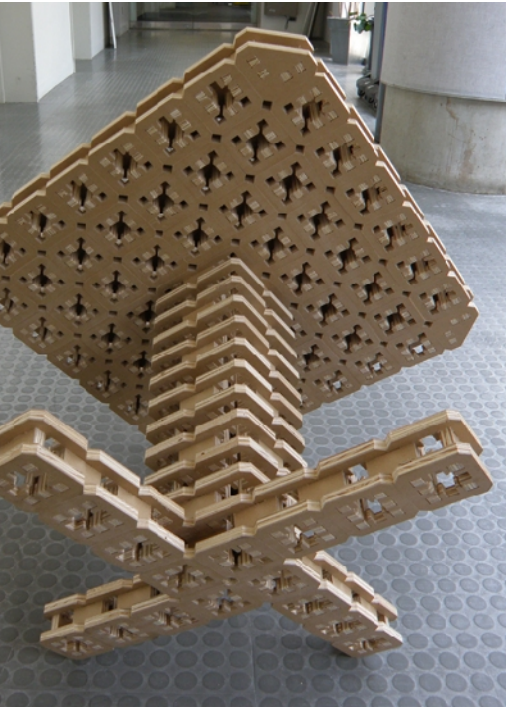
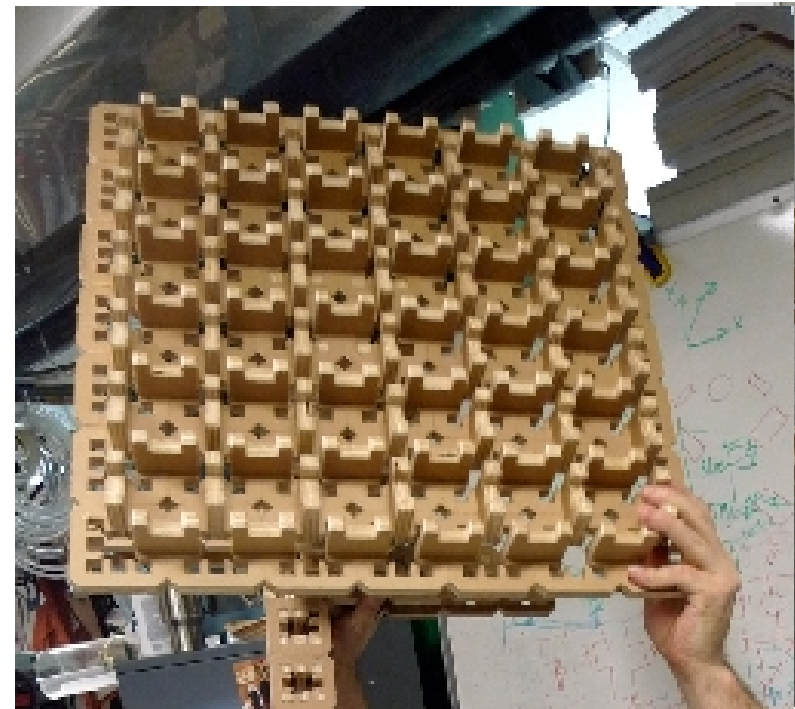
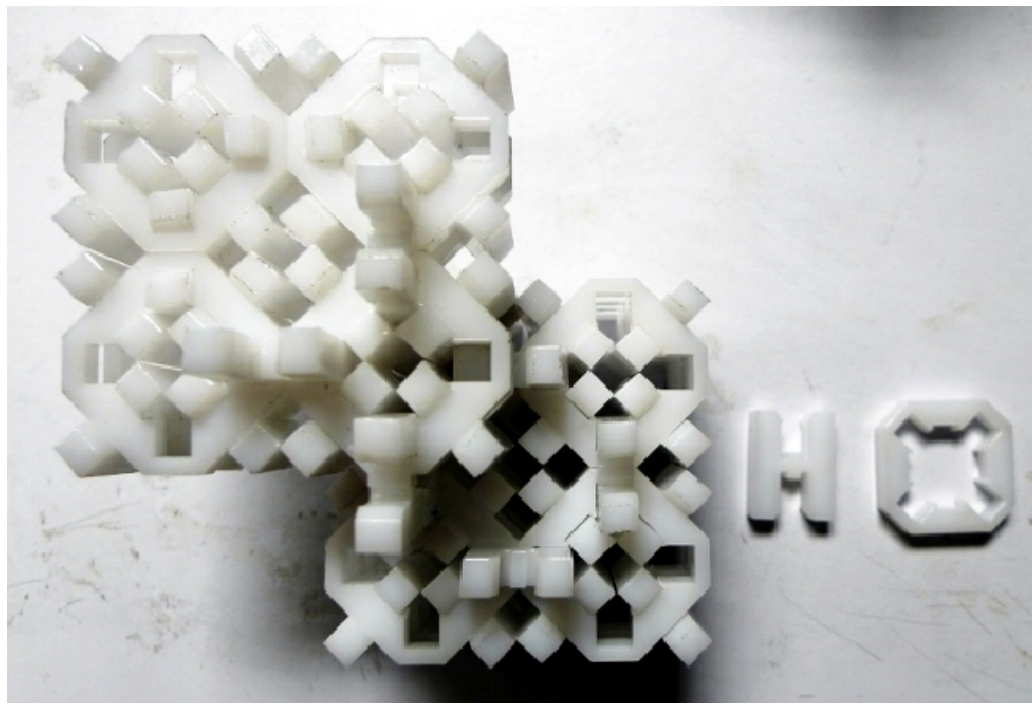
Digital Materials

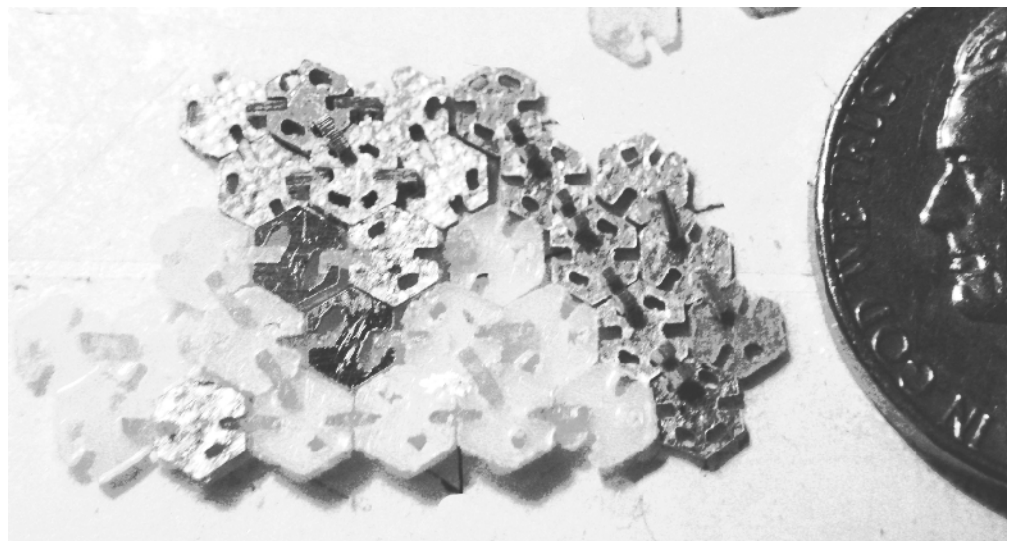
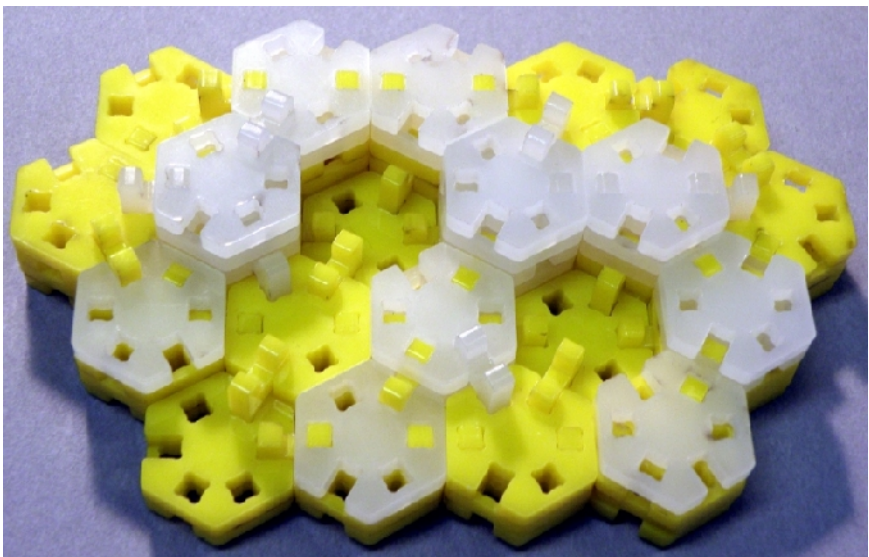
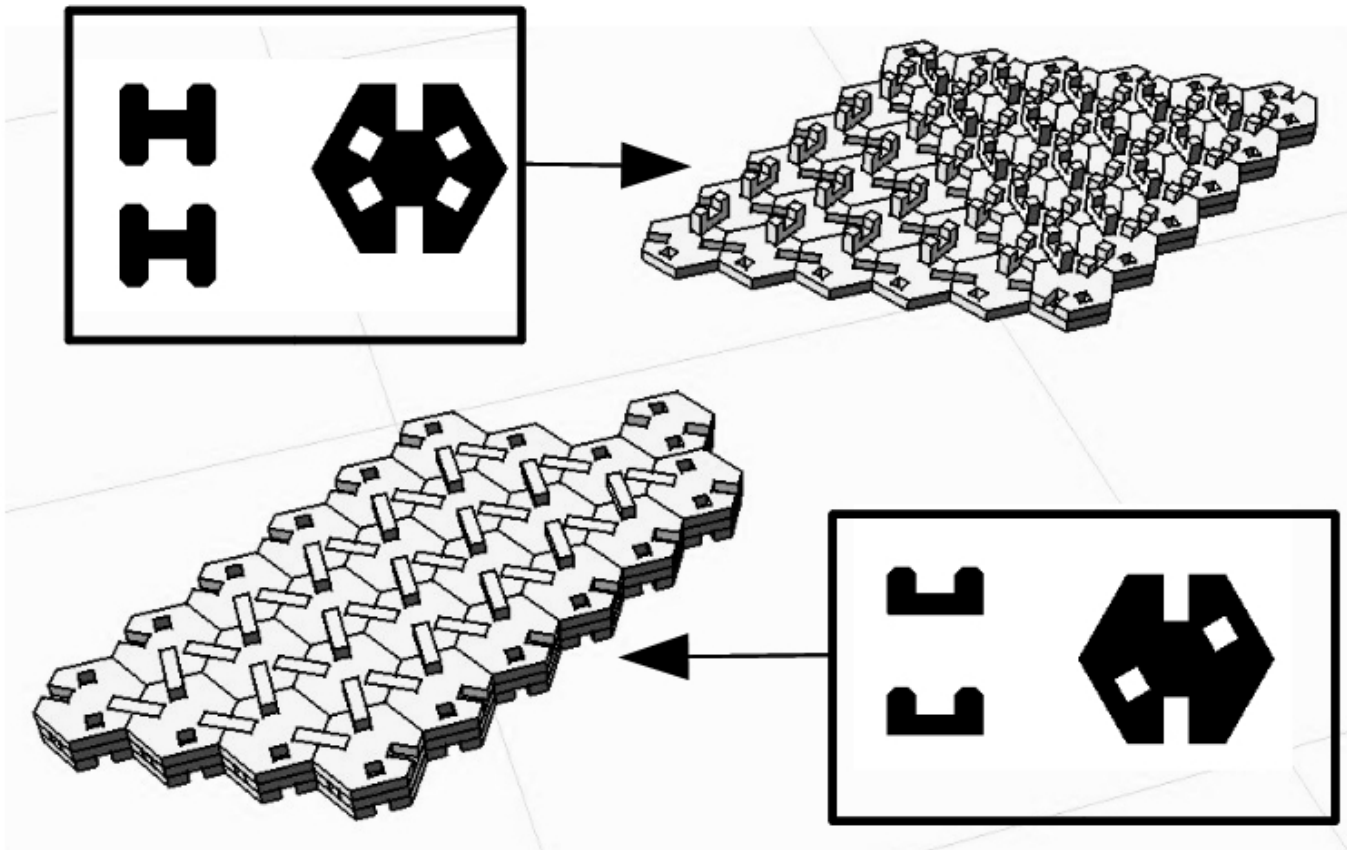


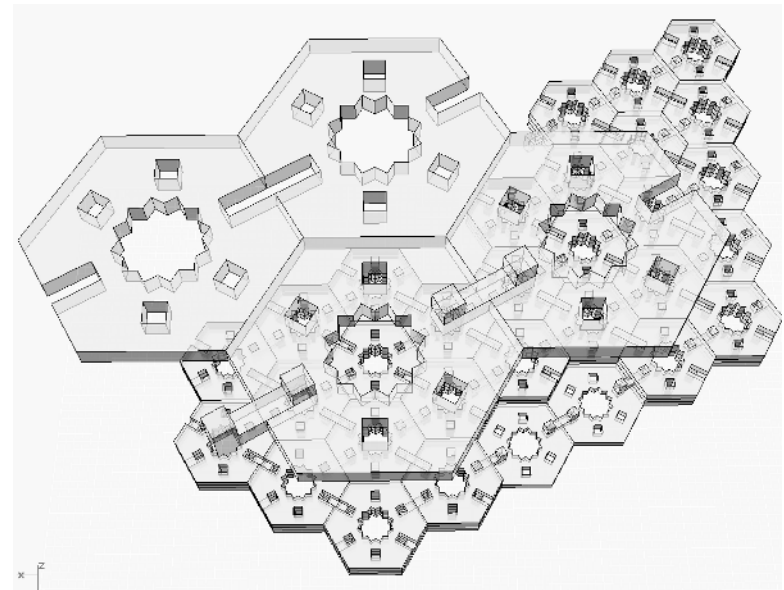
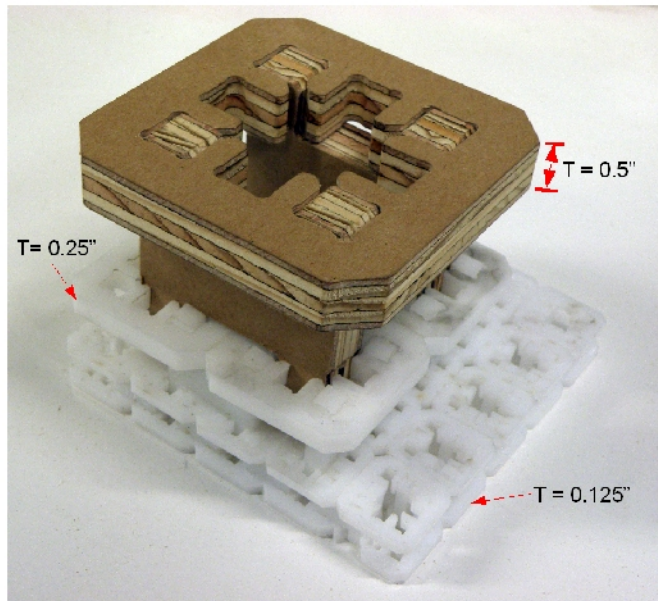
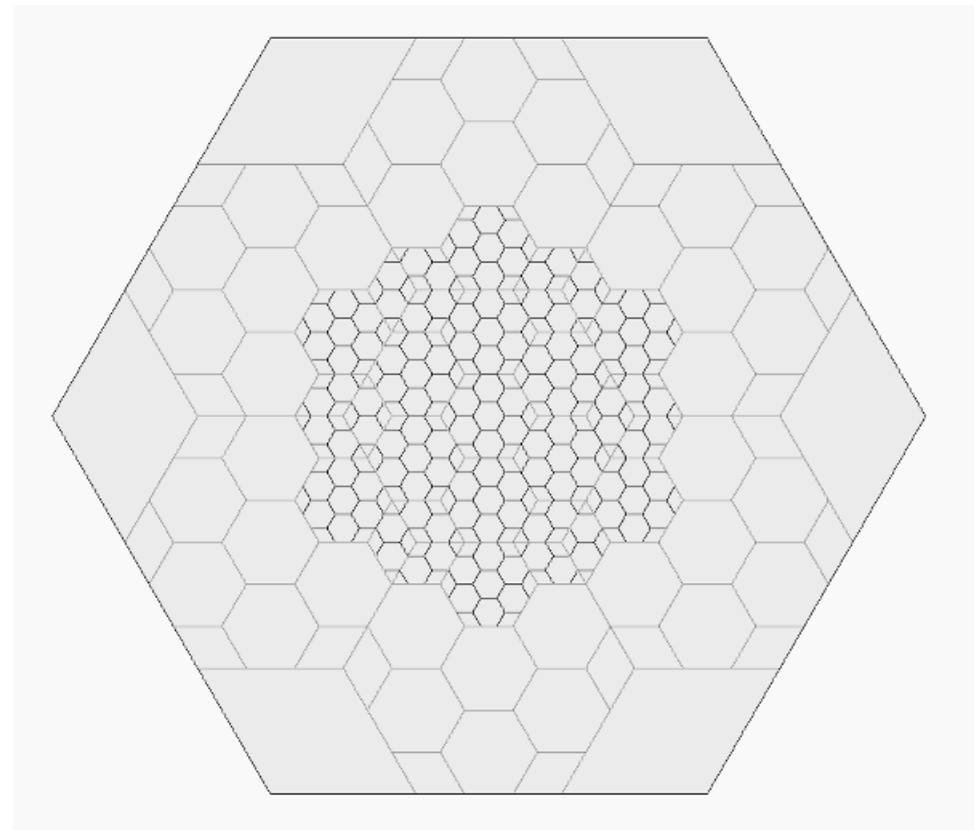
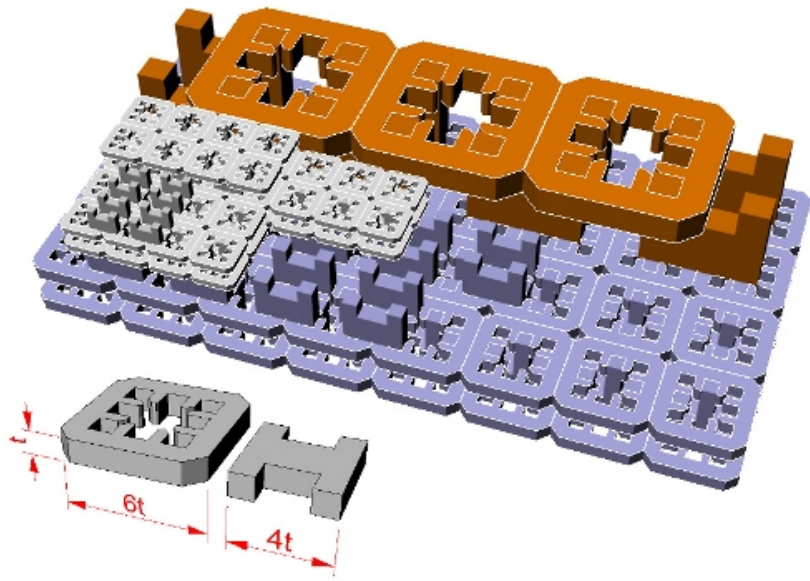
digital materials

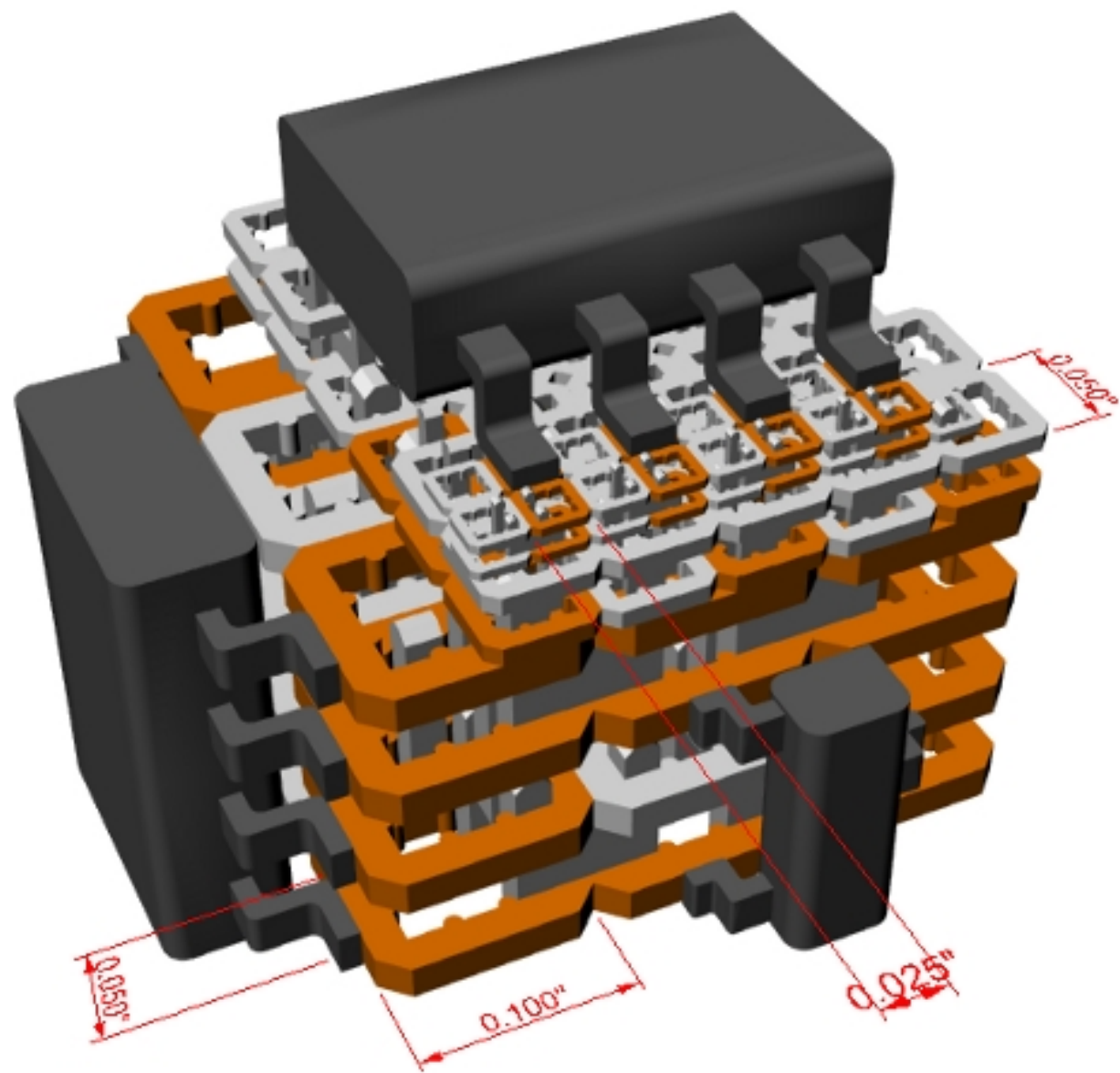
(George Popescu)

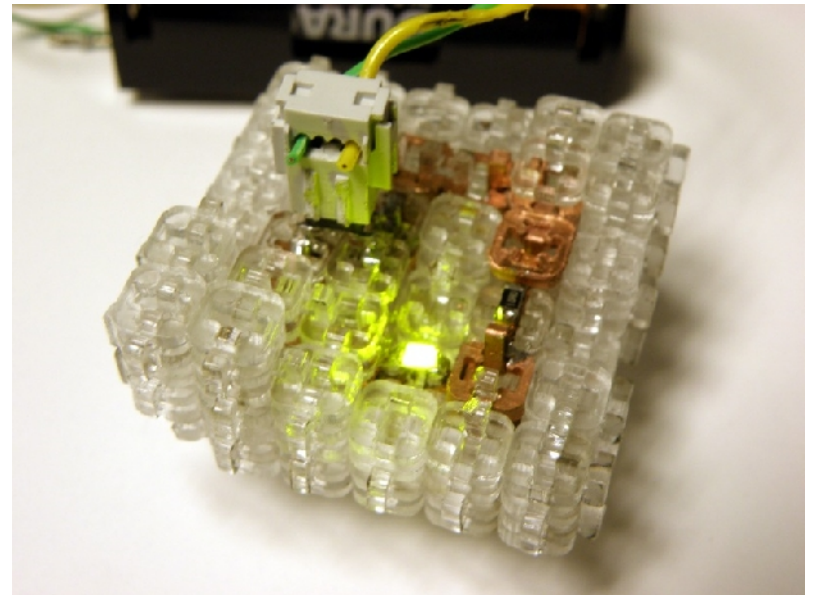
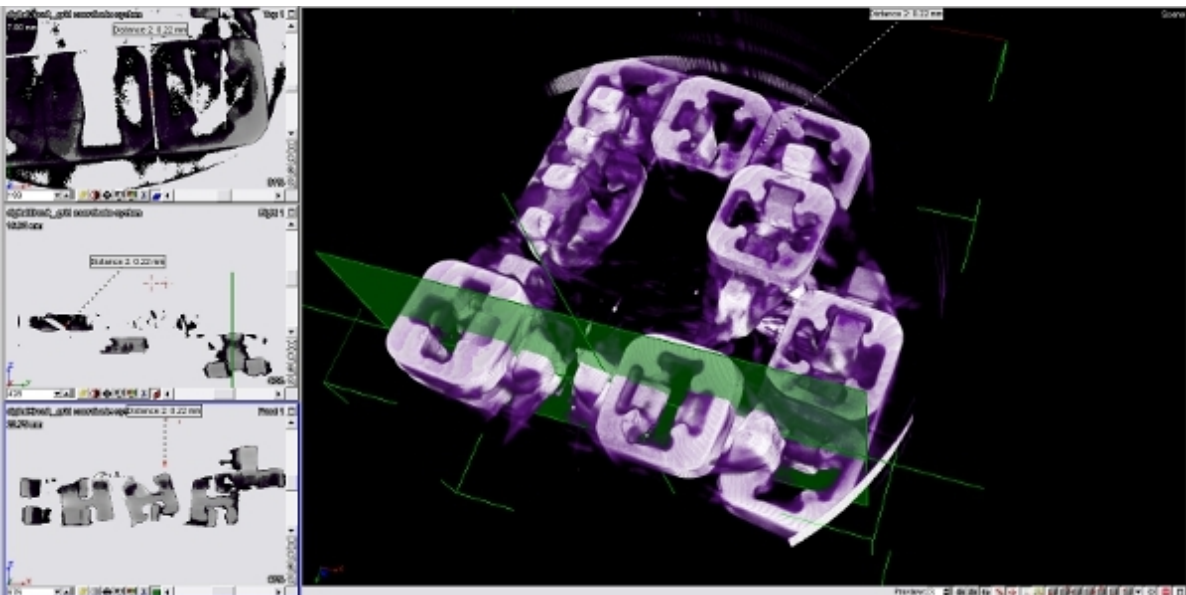
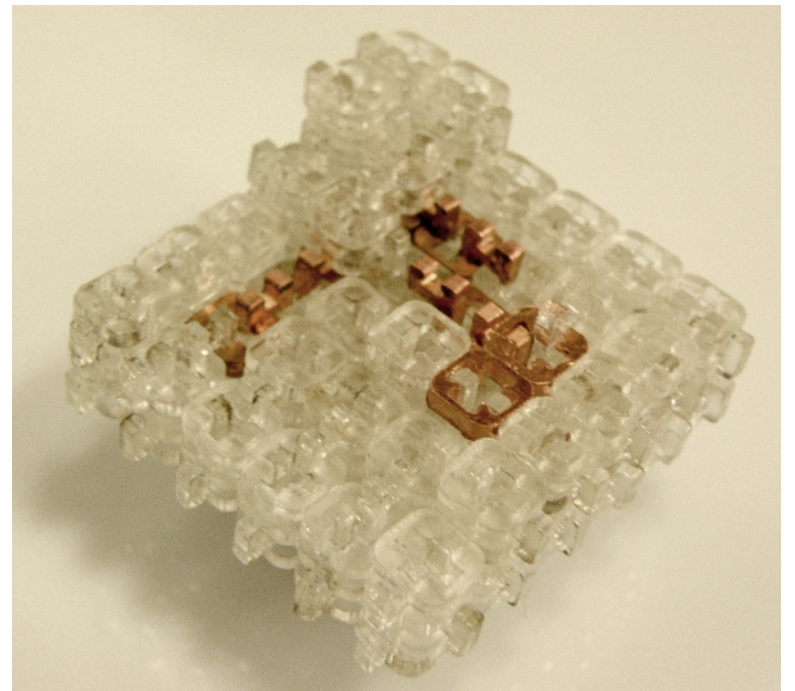


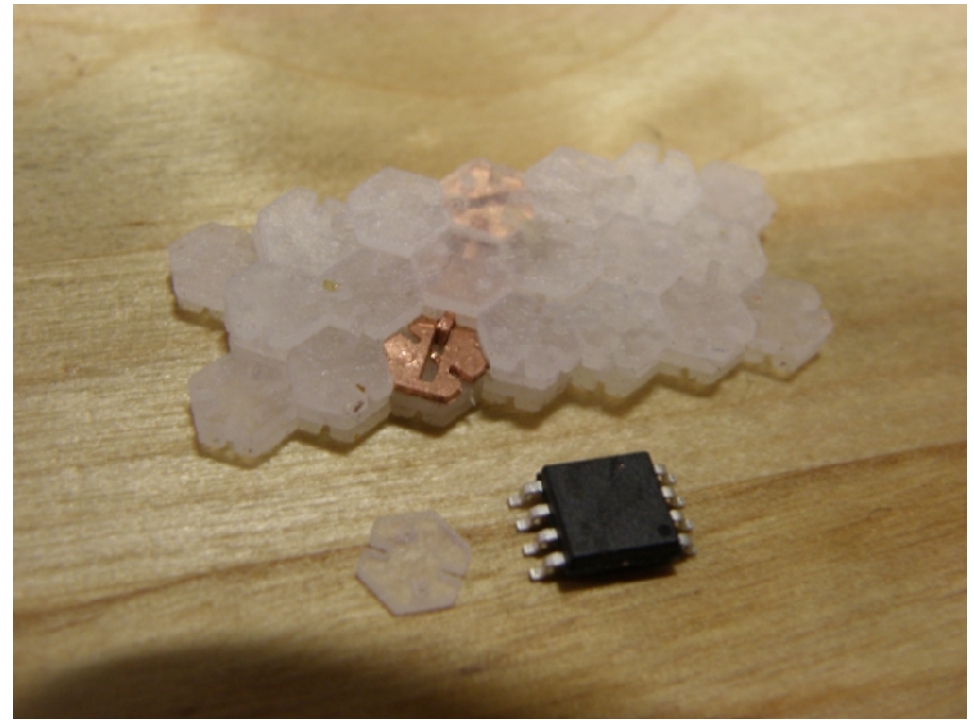
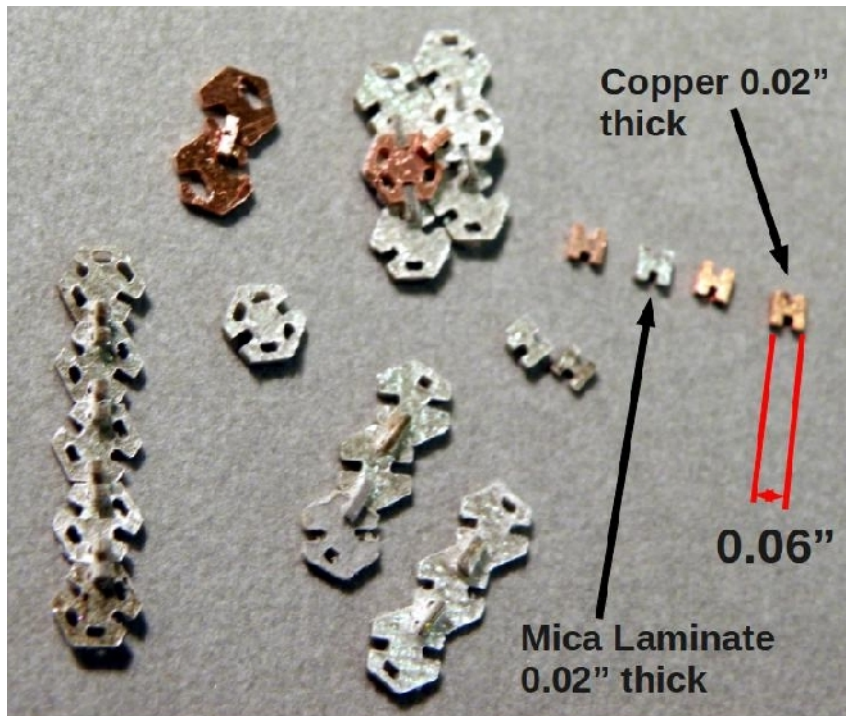
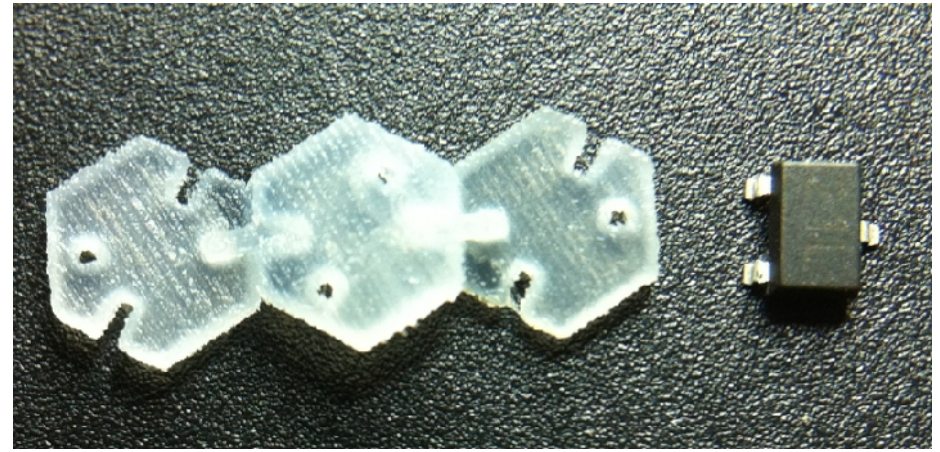
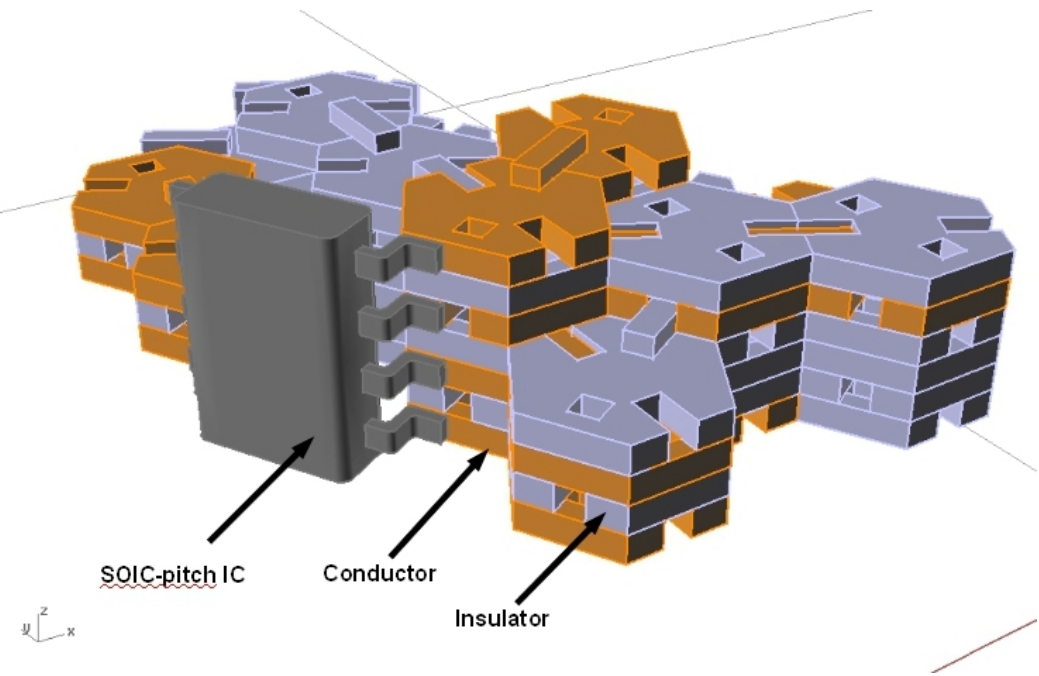


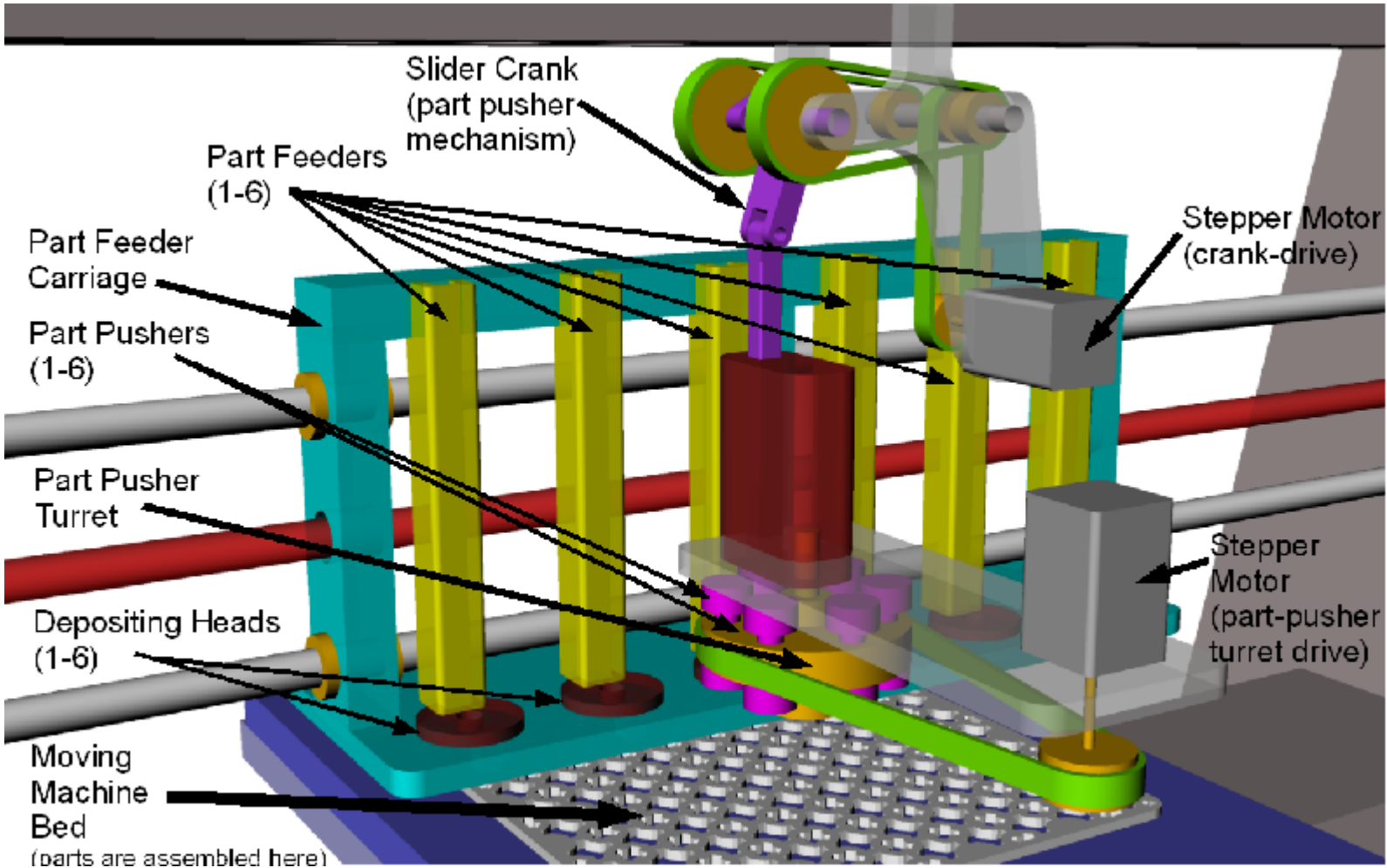


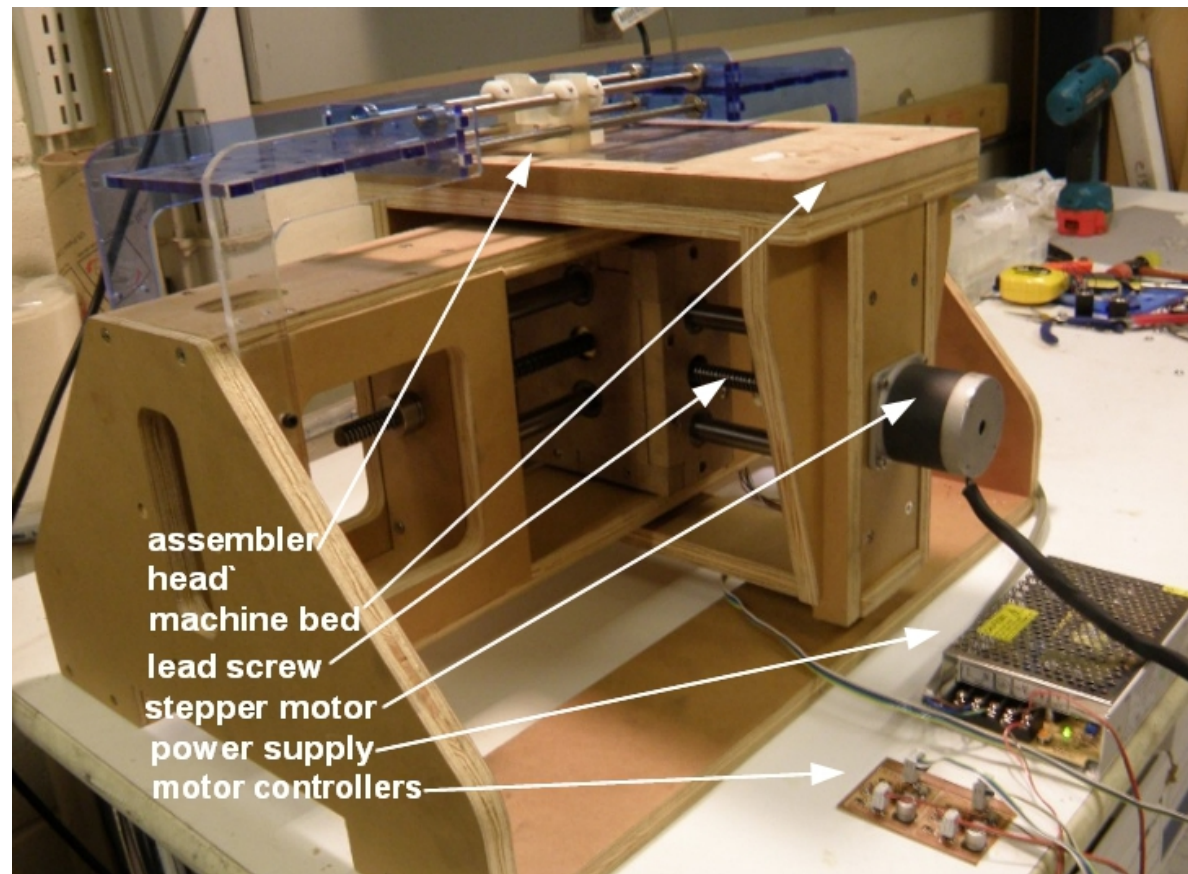
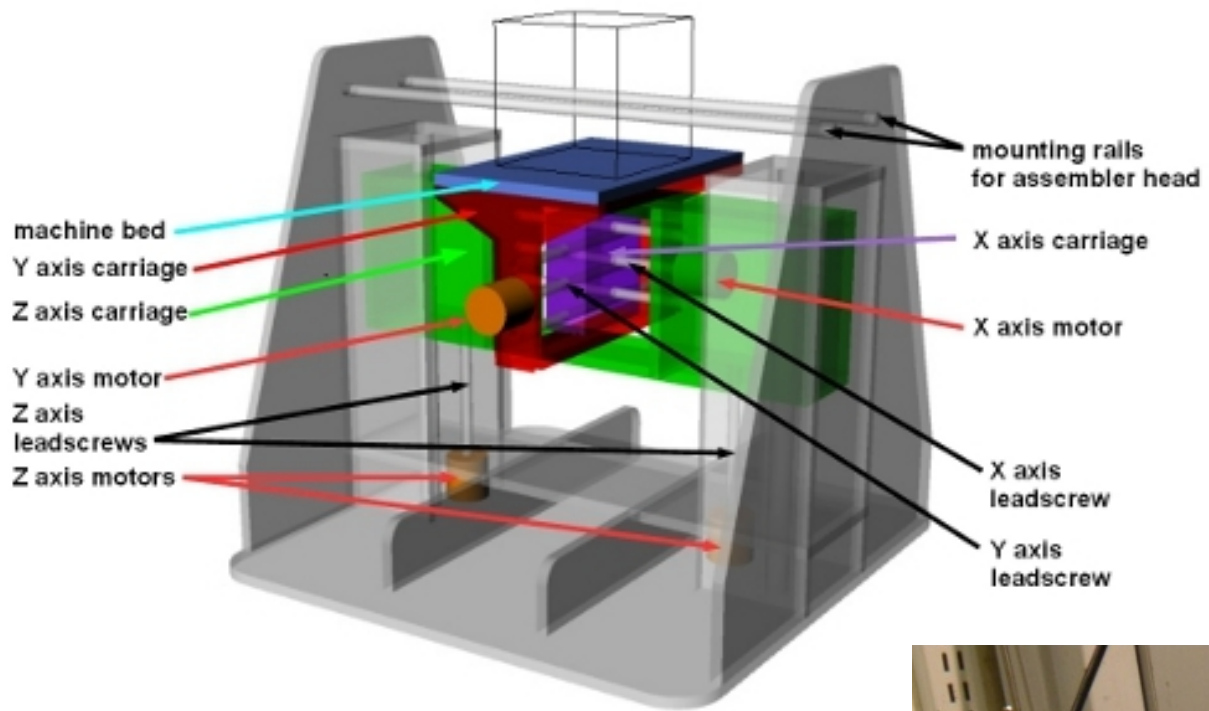


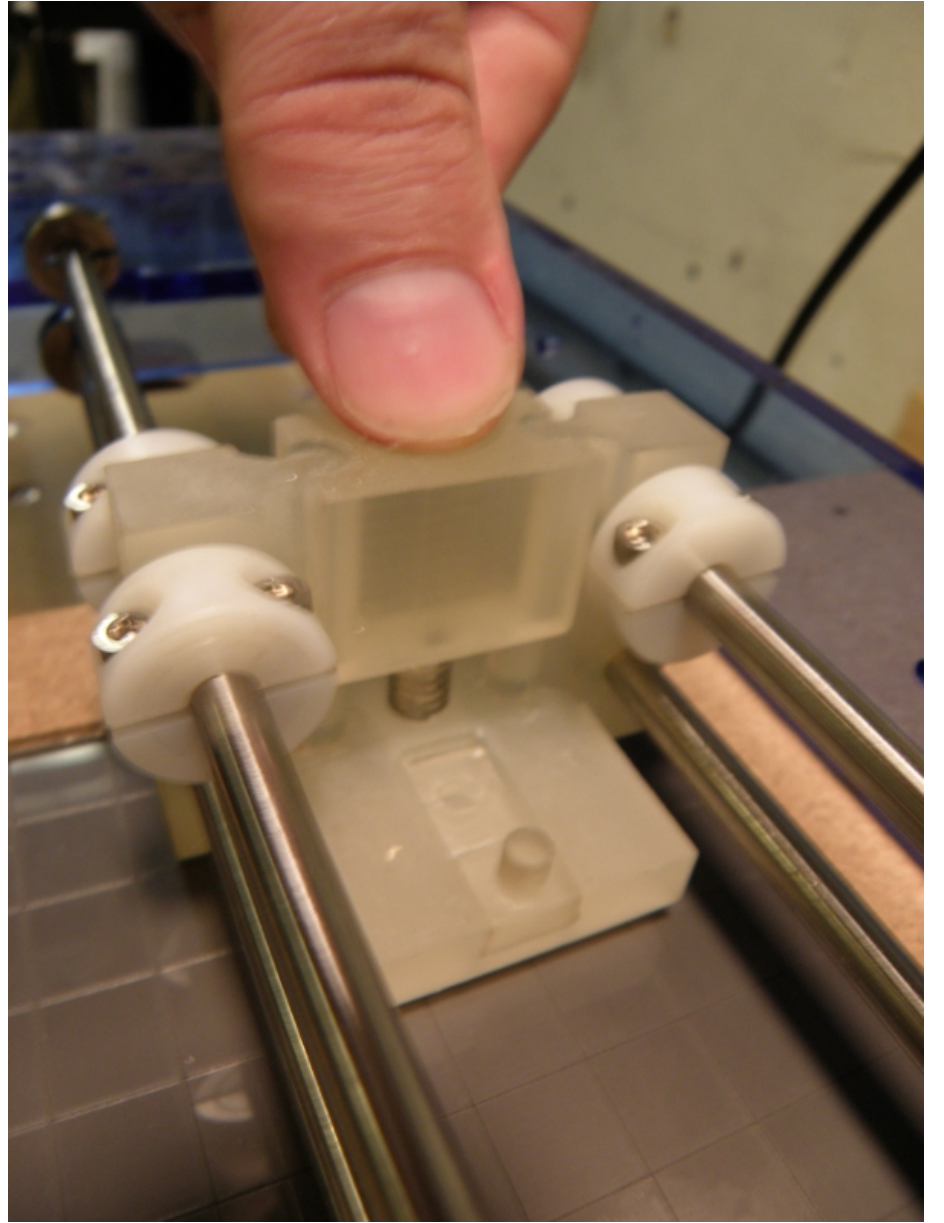
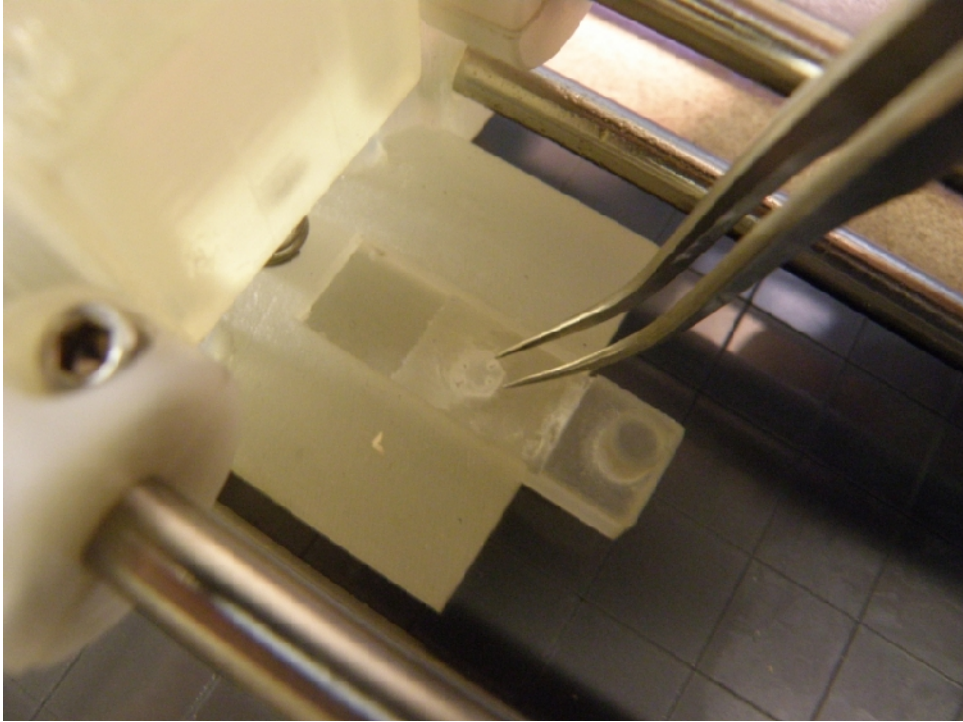


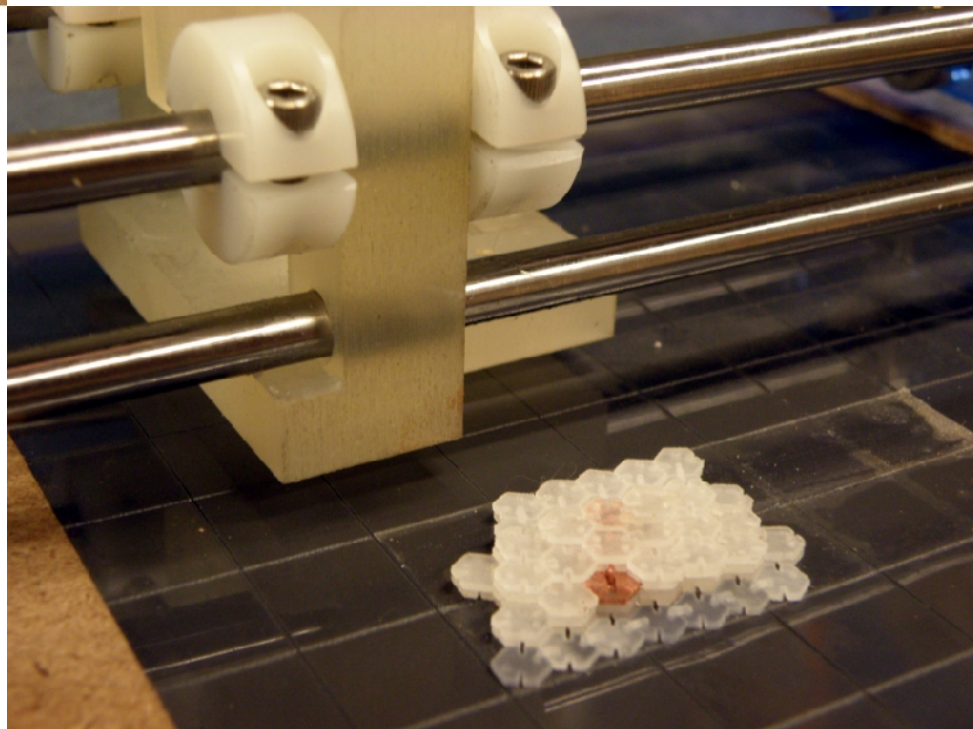
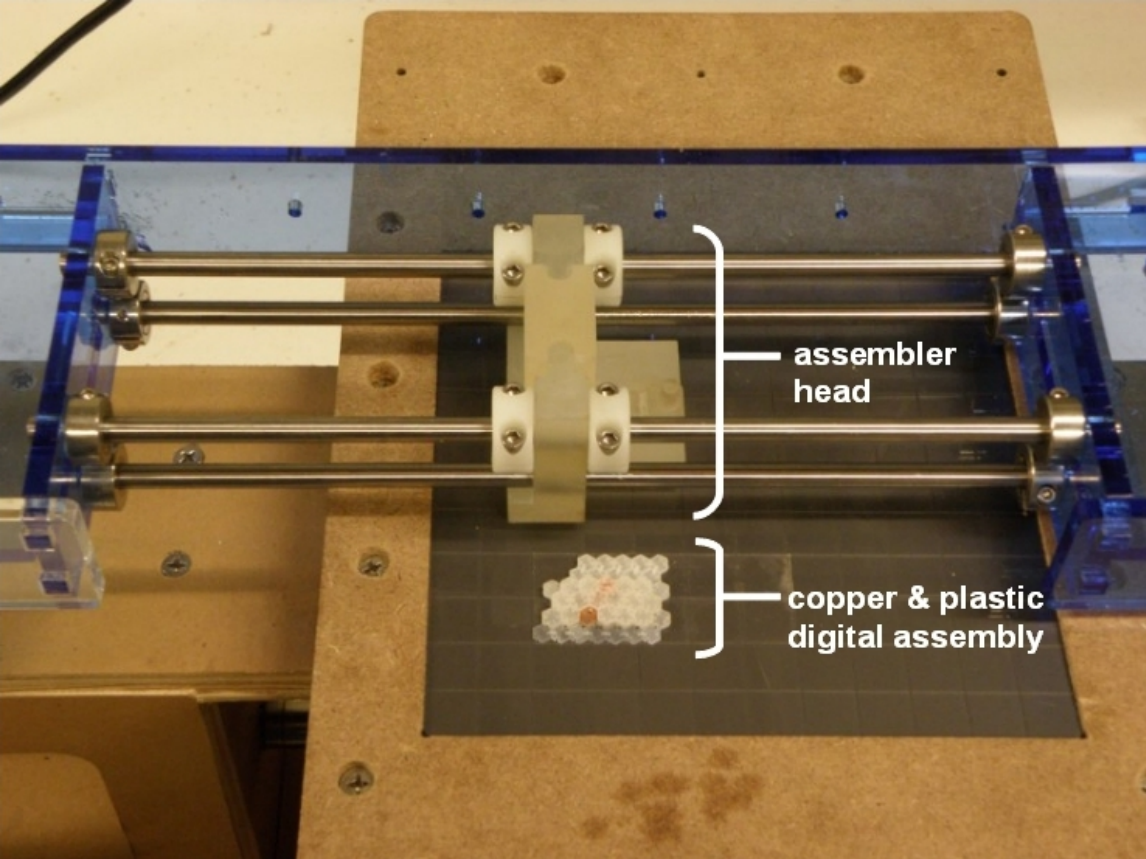












Machine	~Min. Feature Size	~Min. Layer Thickness	~Build Time per 1x1x1" (25.4 ³ mm)	3D Print Process
Invision XT	0.003" (0.0762 mm)	.00158" (0.40132mm)	~6 hrs	Photopolymer
Dimension Elite	0.007" (0.1778mm)	.007" (0.1778mm)	~1 hr	FDM
Rep Rap Mendel	0.080" (2.032mm)	0.012" (0.3048mm)	~1 hr	Thermoplastic Extrusion
Objet Connex 500	0.001" (25.4 microns)	0.0006" (16 mcrons)	~1 hr	Photopolymer
Digital Assembler	Part Assembling Rate	Voxel Size	Build Time per 1 ³ (25.4 ³ mm)	Number of voxels per 1 ³ inch
1.0	1 Hz	0.25" (6.375 mm)	~1 min	64
2.0	15 Hz	0.025" (0.635mm)	~1 hr	64000
3.0	15 kHz	0.0025" (0.0635mm)	~1 hr	64.0E+06
4.0	15 MHz	0.00025" (6.35 microns)	~1 hr	64.0E+09



